



CENTRAL TEXAS
Student*Futures*
PROJECT

CREST Meeting Update

November 1, 2010

Research Questions



- What are graduating seniors' **high school experiences, plans and preparation** for life after high school?
- What share of high school graduates **enroll in postsecondary education, become employed,** or do both in the fall after graduation?
- What share of graduates are **enrolled and/or employed** over time?
- Which **factors** are **significantly associated** with positive **postsecondary education and employment outcomes**?
- How do these outcomes **change over time** for each cohort of graduates and selected populations groups?

Work Currently Underway



- **2010 senior survey report**
 - Focus on changes over time
 - Scheduled for December 2010 release

- **Factors linked to initial enrollment for 2008 and 2009 graduates**
 - Incorporation of college-readiness measures
 - Focus on graduates in middle of class rank
 - School and district variation
 - Comparison of results using Texas longitudinal data system (ERC) data
 - Scheduled for April 2011 release



Composition of Graduates (2007 Districts)



The shares of Hispanic and low-income graduates are gradually increasing over time.

	Class of 2007	Class of 2008	Class of 2009
Totals	9,410	10,452	10,793
Ethnicity			
Asian	6%	6%	6%
Black	11%	12%	12%
Hispanic	29%	31%	32%
White	52%	52%	48%
Gender			
Female	48%	50%	50%
Male	50%	50%	50%
Family Income Status			
Low-income	21%	23%	26%
Not Low-income	73%	73%	70%
Special Education Status			
Special Education	9%	9%	9%
Not Special Education	85%	87%	87%



Postsecondary Enrollment of Central Texas Graduates in Fall Following Graduation (2007 Districts)



	Class of 2007	Class of 2008	Class of 2009*
Total Number of Graduates	9,394	10,452	10,793
Percent Enrolled in Fall	62%	62.5%	62.5%
<i>Type of Institution</i>			
-4-Year College/University	40%	40.4%	39.0%
-2-year College/Technical School	22%	22.1%	23.5%
<i>Location of Institution</i>			
-In-state	54%	53.3%	54.7%
-Out-of-state	8%	9.2%	7.8%

* Overall denominator includes 100 students who lacked enough information to link to NSC records; 61% reflects the best possible rate using NSC and THECB data.



Postsecondary Enrollment of Central Texas Graduates in Fall Following Graduation (2007 Districts)

by College Type, Ethnicity and Income Status

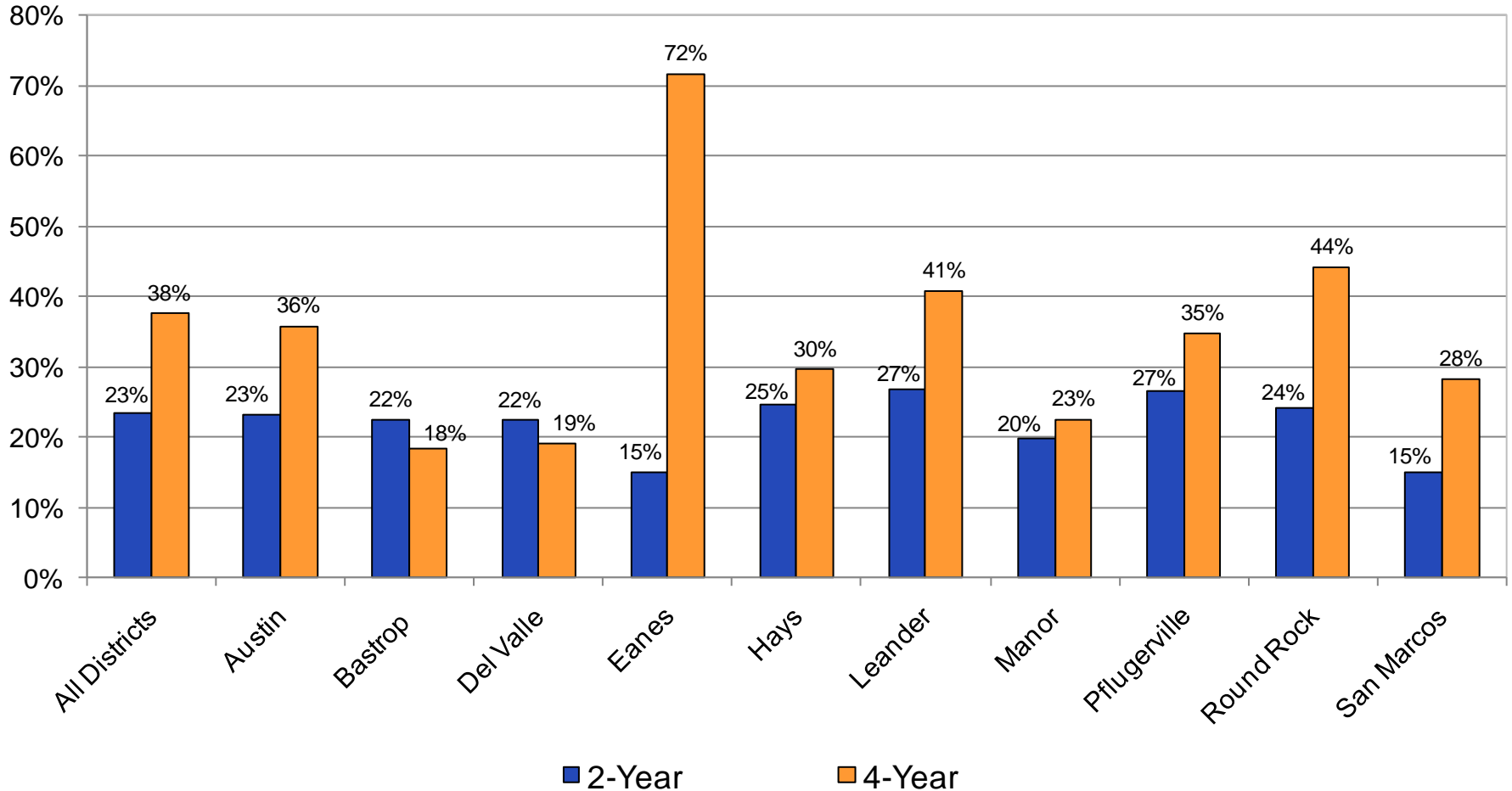


	2007		2008		2009*	
	2-Year	4-Year	2-Year	4-Year	2-Year	4-Year
Enrolled Graduates (%)	22%	40%	22%	40%	23%	39%
Ethnicity						
Asian	21%	57%	20%	63%	17%	65%
Black	23%	35%	22%	33%	25%	36%
Hispanic	22%	22%	23%	22%	25%	23%
White	23%	49%	22%	50%	23%	48%
Income Status						
Low-income	21%	19%	20%	20%	24%	22%
Not low-income	23%	47%	23%	48%	23%	48%
Unknown	21%	12%	22%	11%	20%	6%

* Overall denominator includes 100 students who lacked enough information to link to NSC records; 62% reflects the best possible rate using NSC and THECB data.

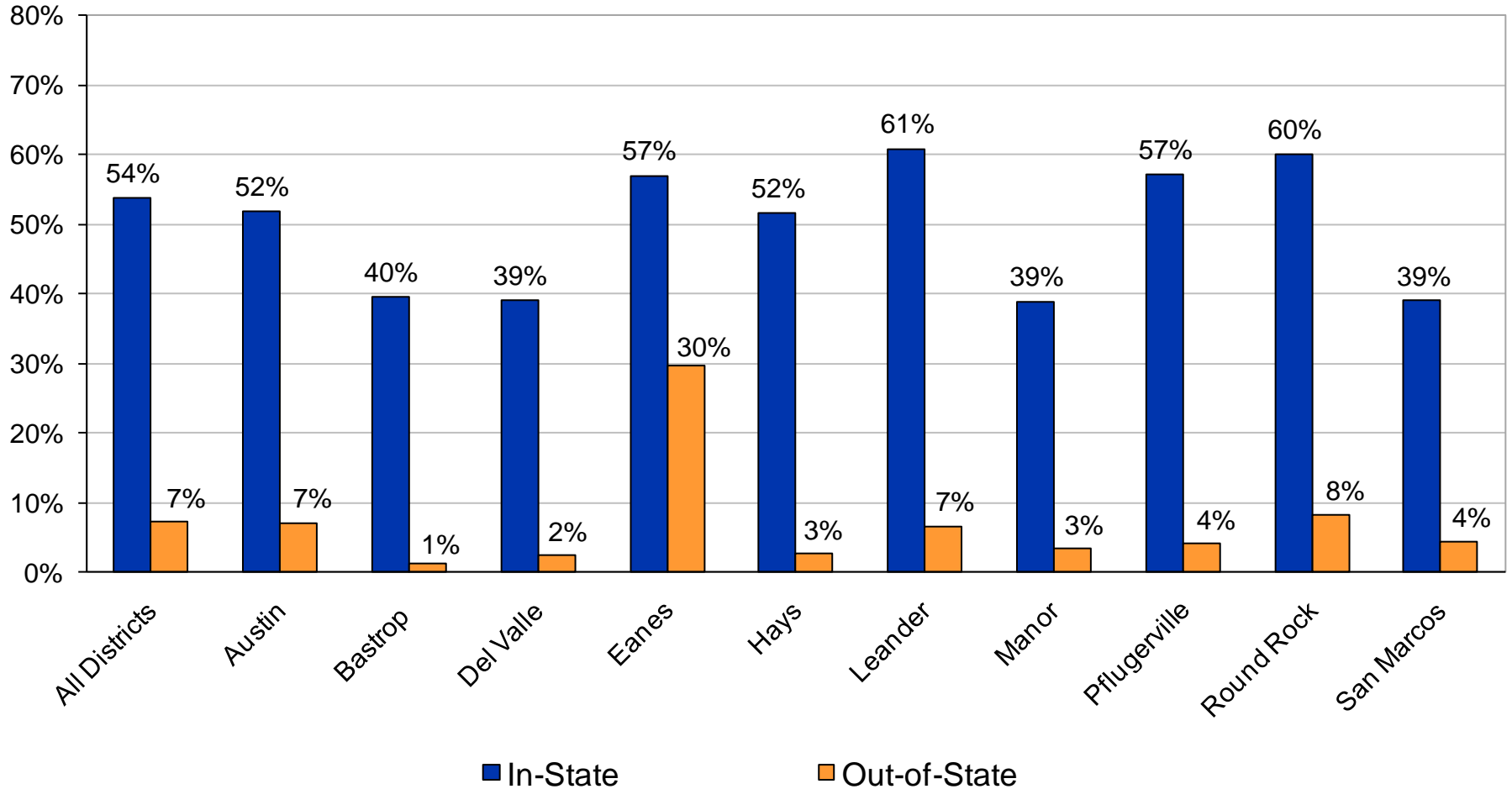


Percent of 2009 Graduates Enrolled in Fall 2009, by College Type and District (N=11,993)



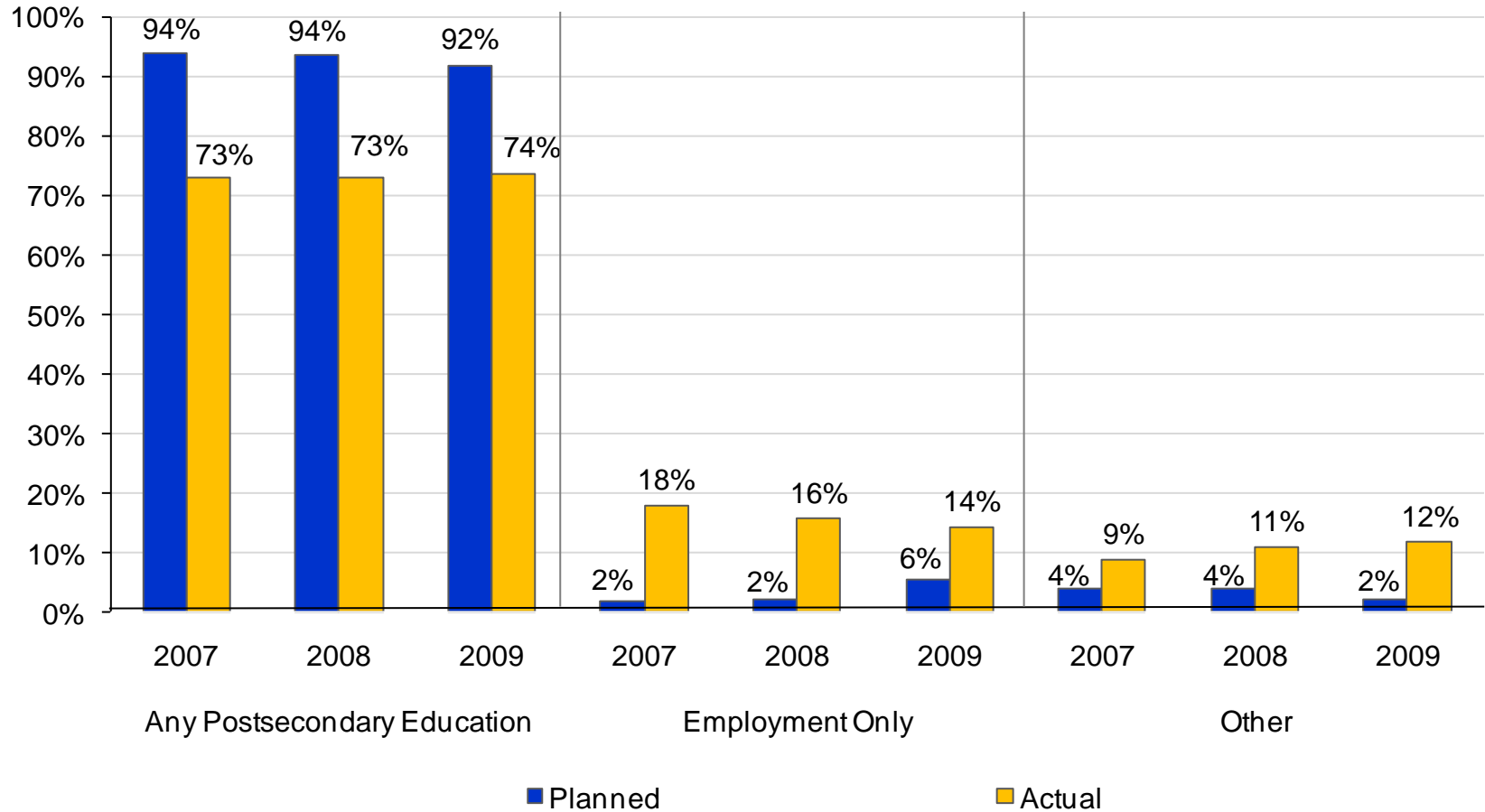


Percent of 2009 Graduates Enrolled in Fall 2009, by Location and District (N=11,993)





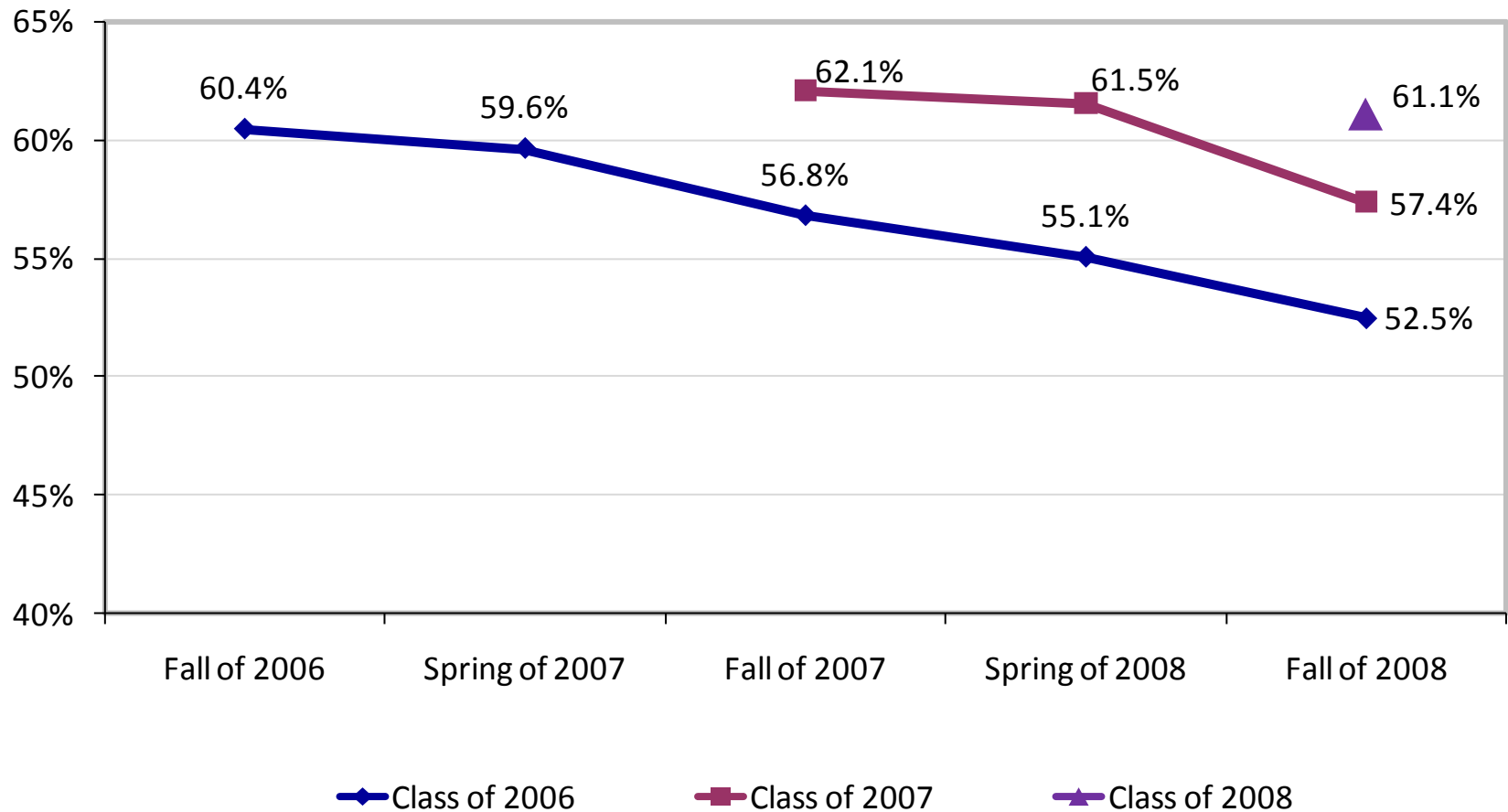
Planned versus Actual Activities in Fall for Surveyed Graduates (2007 Districts)





Postsecondary Enrollment Over Time, by Graduating Class

(not yet updated)





Central Texas Graduates Employed in Texas

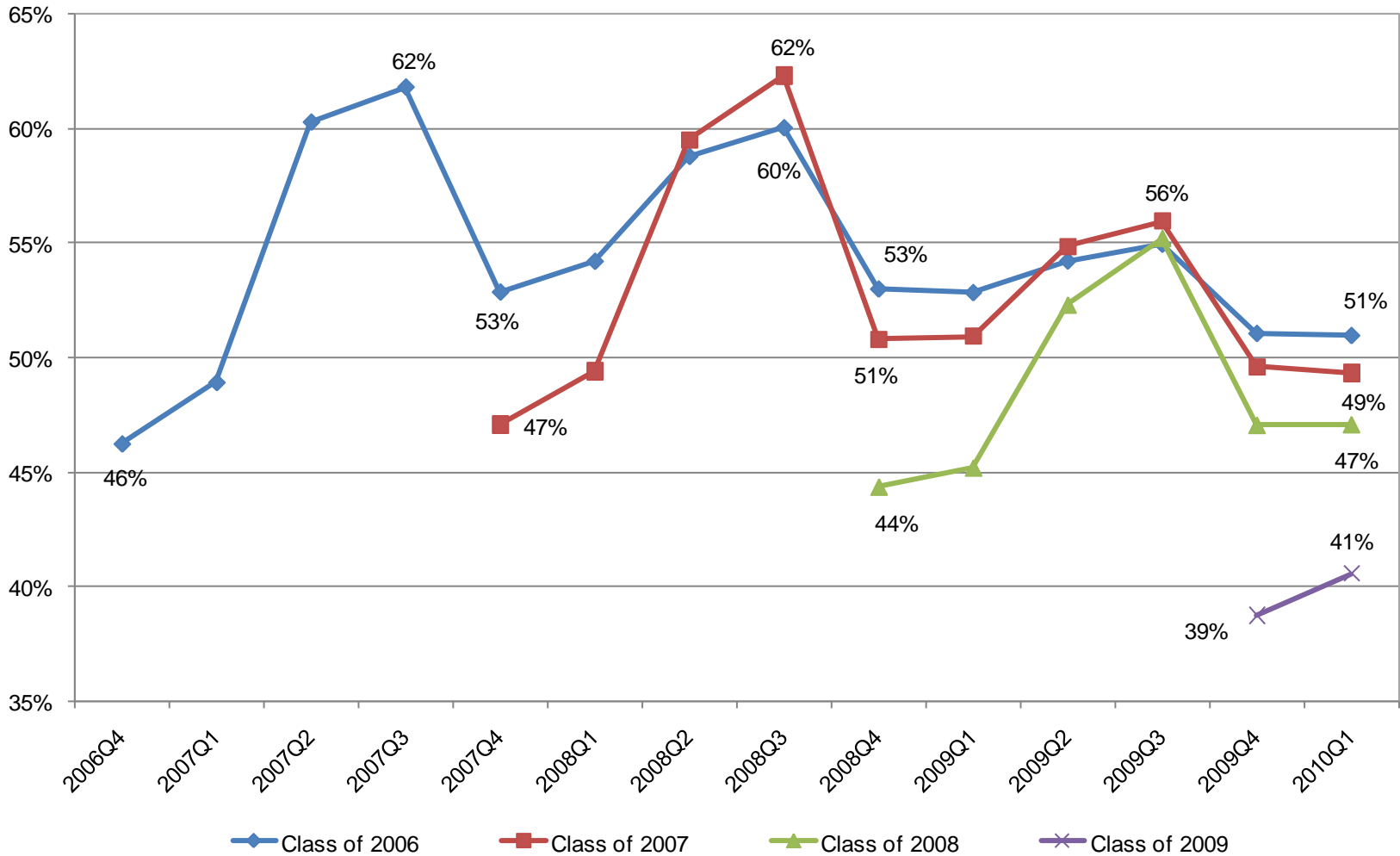


	Employed		Only Employed	
	2009	Change in Rates 2007-2009	2009	Change in Rates 2007-2009
Employed Graduates (%)	39%	-7%	18%	-3%
Ethnicity				
Asian	20%	-10%	4%	-5%
Black	39%	-14%	18%	-9%
Hispanic	42%	-11%	24%	-6%
White	38%	-5%	15%	-2%
Income Status				
Low-income	40%	-13%	23%	-10%
Not low-income	38%	-6%	15%	-3%

Note: 2009 results are preliminary; employment status was unknown for 15% of graduates.



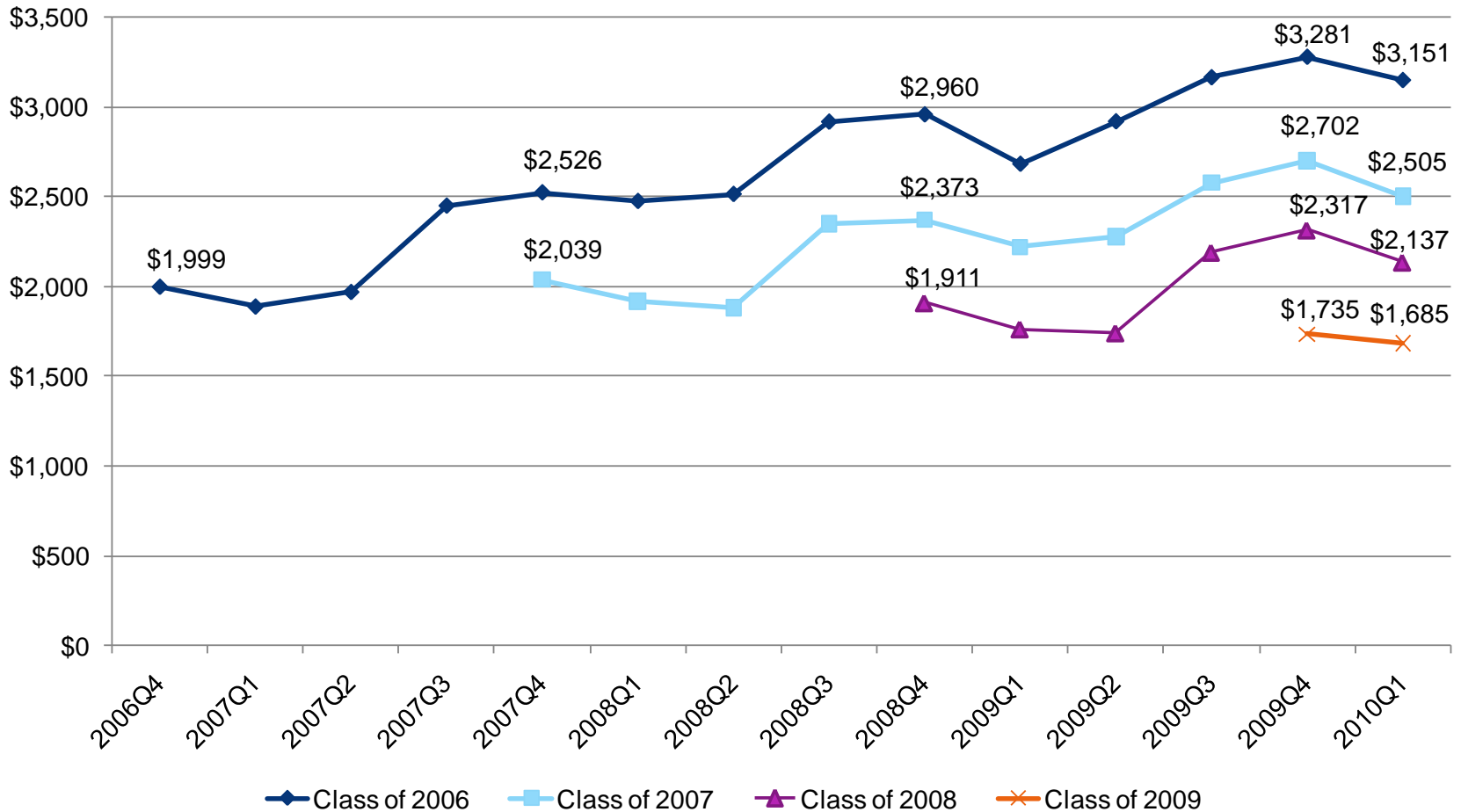
Overall Post-Graduation Employment Status, by Graduating Class





Median Earnings by Quarter for Central Texas Graduates

(Through the Spring of 2010, Any Employment by Cohort)



Implications for Policy



- Focusing on college preparation activities (college enrollment counseling, college applications, FAFSA, etc.) can improve initial postsecondary enrollment for all groups
- The recent economic downturn shows that other strategies may be needed to continue improvement for groups that traditionally have not attended college at comparable rates
- Because most graduates attend Texas colleges, affordability of those schools is an important public policy objective for continuing to increase overall enrollment
- More work is needed to:
 - explore promising interventions for low-income and Hispanic students
 - better understand the relationship between various education and work pathways and future career success



For more information:

www.centexstudentfutures.org

Contacts:

Deanna T. Schexnayder
dschex@austin.utexas.edu
512.471.2193

Christopher T. King
ctking@austin.utexas.edu
512.471.2186

Ray Marshall Center for the Study of Human Resources
Lyndon B. Johnson School of Public Affairs
The University of Texas at Austin



RAY MARSHALL CENTER
for the Study of Human Resources